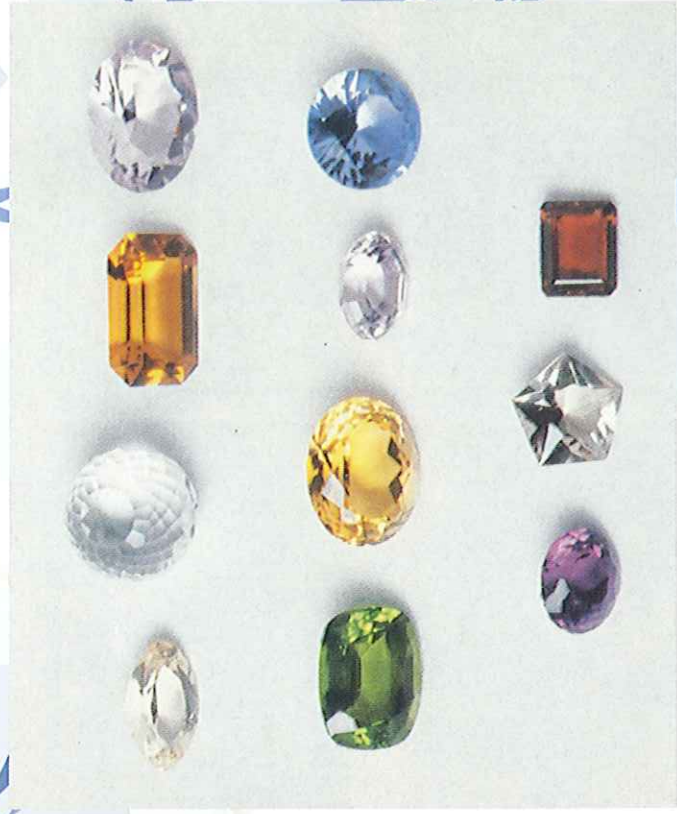
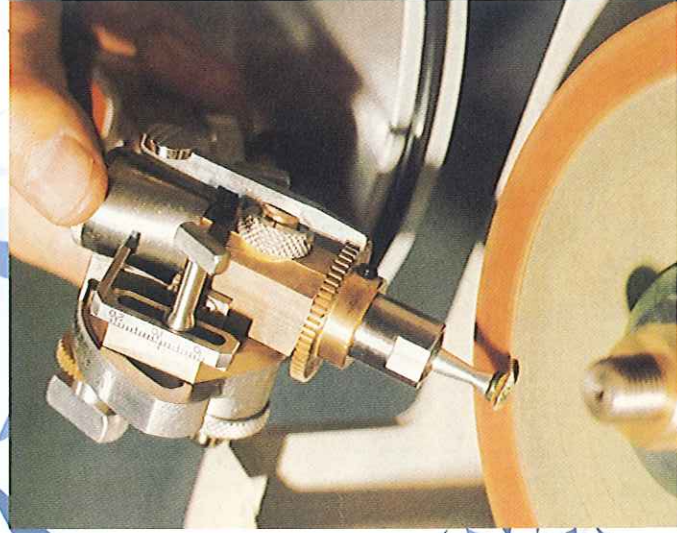
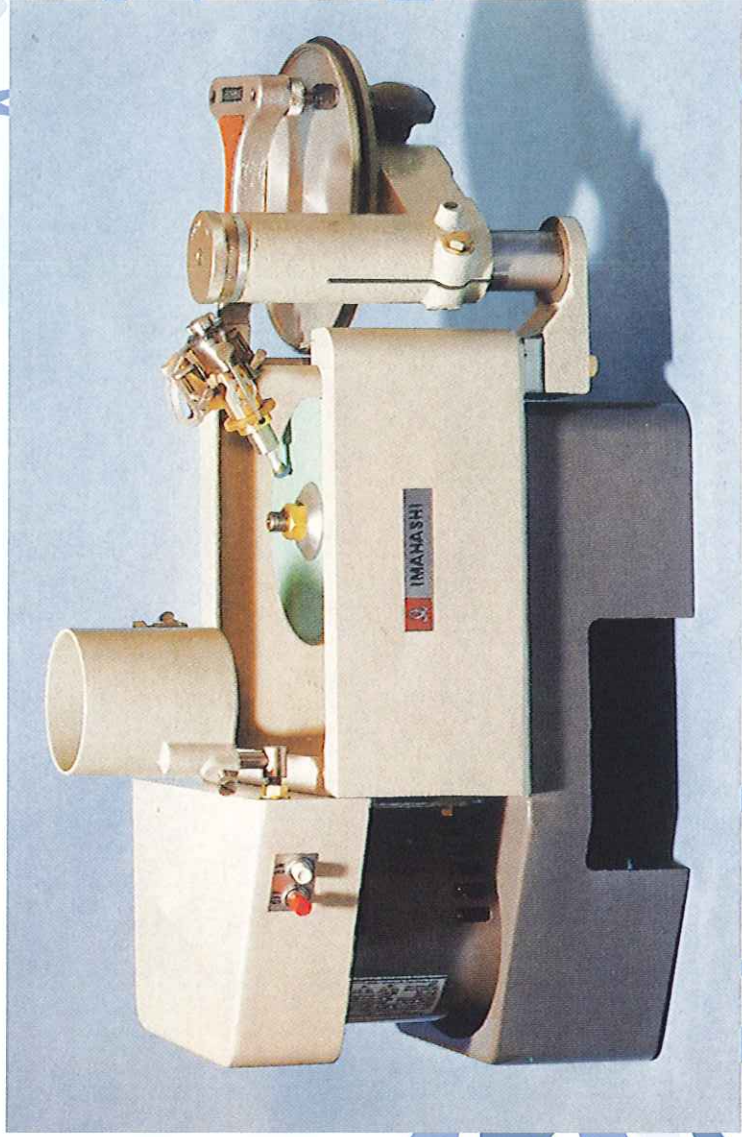




IMAHASHI FACETING UNIT MODEL FAC-8



FACETING UNIT Model FAC-8

Facet cut can be made with this unit.

The IMAHASHI Faceting Unit consists of the following three main components

(1) Lap Assembly

The lap assembly consist of cast aluminum alloy housing, in which the spindle unit is firmly mounted. The spindle unit is constructed with completely sealed ball bearing and insures smooth running.

(2) Faceter table

The faceter table has a steel column, a cast iron bracket and aluminum table on which the faceter rests. Distance between lap and table is easy adjusted by eccentric movement of the table.

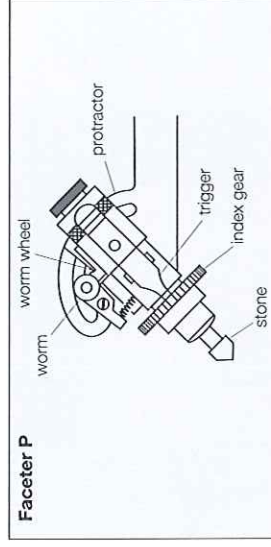
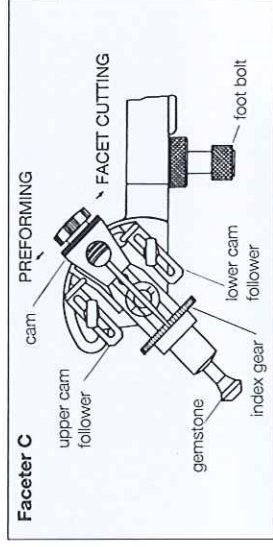
The table is raised or lowered by micrometer dial to allow the operator accurate control of the cutting depth.

(3) Faceter

Faceter C & P are available to suit individual requirements. Faceters consist of cast iron aluminum frame with protractor to set cutting angle, and faceter spindle assembly made of rust-proof material. These facters are not connected to the machine and they may quickly be lifted off the table inspected the progress of the work.

Even a beginner can perform any cuts like brilliant, oval, marquise, with small effort and short practice.

You can create or develop entirely your own cuts.



DUAL INDEXING

Various combination of index gear with worm and worm wheel permit a great number of divisions.

Two kinds of Faceters with different characteristics

Faceter C is a standard model and fitted with replaceable cams. The cams permit correct performing of various shapes such as round, oval, marquise and pedeloque.

Faceter P has a dual indexing device for supper precision indexing.

“P” means precision and professional. This faceter is used not only by the professional person but also the field of hobbyist and students.

It is especially effective for recuting gemstones.



Faceter C:

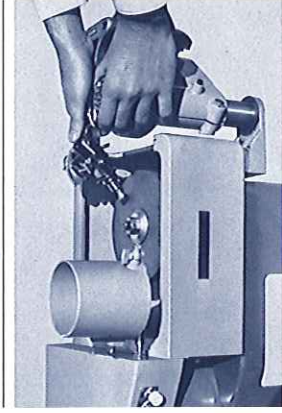
Standard type with replaceable cam.



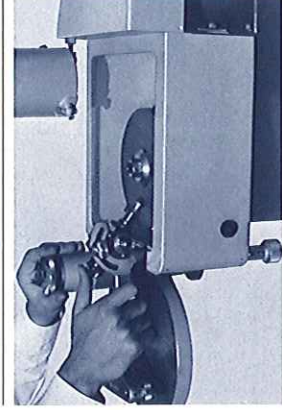
Faceter P:

Rigid type with dual indexing

Faceting the main facet



Faceting the star facet



Grinding performing

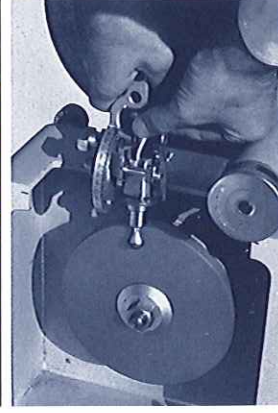
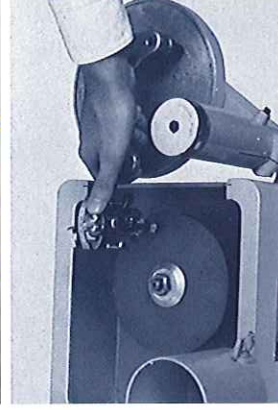


Table cutting



The main body of machine which does not install faceter table. (It is used for Grinding & Polishing for glass, ceramics, etc.)

SPECIFICATIONS

Length.....	650mm
Height.....	270mm
Width.....	270mm
Spindel speed 50Hz	600, 1430rpm
60Hz	720, 1720rpm
Lap diameter.....	150-200mm
Motor	200W
Net weight	23kg



IMAHASHI MFG. CO., LTD.

533 Hino, Hino-shi, Tokyo, Japan

TEL: (042) 582-1508, FAX: (042) 584-2780 E-mail: tokyo@imahashi.net